

TEST RESULT : 197 - ILL 2012





Applicant	SPOTLINE
Att. mr.	DELL'ORTO
Date of issue	27/12/2012
Issued by	S. MASCHI CLAI...
Signature	

Il presente documento rappresenta in modo semplificato i risultati riscontrati durante l'analisi del prodotto e le indicazioni per i miglioramenti

I risultati indicati sono relativi solo all'oggetto verificato

This document represents in a simplified way the results found during the analysis of the product and the suggestion to improve the product

The test results presented in this report relate only to the object tested

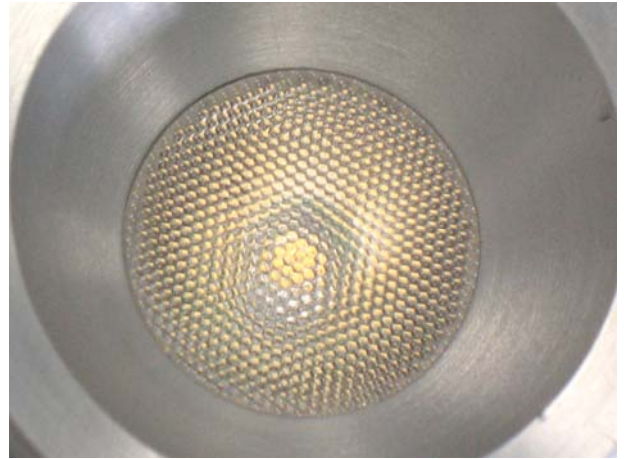
Object	Recessed Luminaires				
Model or series	FIX LED and 6310				
Characteristics	LED , IP X5 FOR EXPOSED PARTS				
Standard	EN 60598-1:08+A11:09 sec. 9.2.6				
Revision test	1 st check	Final result	COMPLY		
Request sample	/				
EMC Test	/	Final result	/		
Instruction sheets	/		/		
Other	/				

9.2.6 Resistance to water

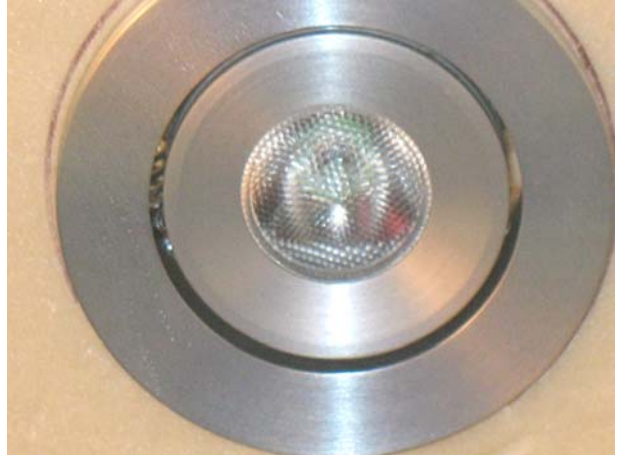
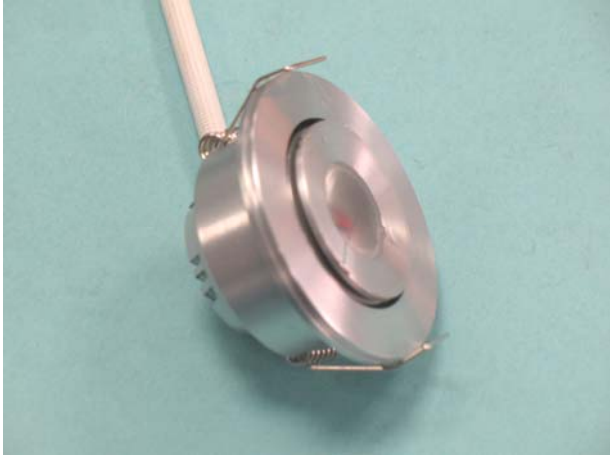
Il test IP X5 - resistenza ai getti d'acqua - eseguito sulla parte esposta dei campioni **FIX LED** e **6310** ha avuto esito positivo ; si allegano alcune fotografie

The test IP X5 - resistant to water jets - run sulla exposed samples **FIX LED 6310** and was successful, you attach some photos

PHOTOGRAPHIES cod. FIX LED



PHOTOGRAPHIES cod. 6310



TEST RESULT : 197 - ILL 2012

Instruments list

ID	Description	Manufacturer	Model
1	Digital wattmeter	Yokogawa	WT 110
2	Ibrid recorder	Yokogawa	DR130
4	Earth continuity tester	SIF 0	25A12
6	Hand held thermocouple reader	FLUKE	52
10	Digital calliper	/	0-150mm
12	Thermoigrometer	/	/
13	Dynamometer screwdriver	Torqueleader TT	250
16	Ball pressure apparatus	ATS Galbusera	02,04
17	Jointed test finger	ATS Galbusera	01.01
18	Unjointed test finger	ATS Galbusera 01,02	A
19	Oven	MPM instruments srl	M120 VN
24	Voltage changer	Iskra	HSN 0203
26	Voltage changer	Metrel	HSN 0203
27	Spring hammer	Italcontrol	044
29	IP test apparatus	ATS Galbusera	/
35	Voltage changer	Metrel	HSN 0203
38	Thermoigrometer	RS	212-124
39	Exane	Carlo Erba reagenti	Esano a solvente
40	Wire 1mm test probe	ATS Galbusera	01,12
41	Milliometer	PSQ Instruments	G301
43	Supply station	Elcontrol energy spa	VIP396
50	Leakage current tester	Prolab	Medical
52	Insulation transformer	Elar	700VA
53	Test pin	Prolab	13 IEC 61032
54	Voltage stabilizzer	Irem	Ministab M206L-4
56	Pendulum goniometer	Starret	492-005
58	Oscilloscope	Metrix	OX 530
60	Glow-wire apparatus	Prolab	GW 960°C
62	Bunsen burner	Prolab	/
65	Hand held digital multimeter	Fluke	183
75	Digital wattmeter	Yokogawa	WT200
76	Ibrid recorder	Yokogawa	DR130
78	Digital micrometer	Mitutoyo	293-801
82	Digital balance	Keenox	2K810
83	Test probe 8mm	Prolab	8 mm
84	Videographic ibrid recorder	Yokogawa	AX 106-1-2
85	Digital wattmeter	Yokogawa	WT 230
88	Voltage changer 30A	SPEI	HSG 260/30
89	Frequency converter (50/60Hz)	MCB	VNN 05C Kva
93	Pocket balance	/	20050
94	Voltage changer	Metrel	HSN 0303
95	Voltage changer	Metrel	HSN 0303
96	Electromagnetic field tester	Narda	ELT-400
98	Leakage current tester	Prolab sas	/
101	Digital multimeter	Yokogawa	755501
102	Electric strenght tester	ABAG	DST - 6KV
103	Chronometer	RS	328005
105	Stand chronometer	RS	3817889
107	Burner with needle	Prolab	BaG
108	Insulation tester	Risatti	Z7 / PL
109	Wet & Endurance room	Prolab	/
110	Thermo-Hygrograph	Geass srl	TIT/01
111	Articulate probe with web stop	ATS Galbusera	art.N.01.22

TEST RESULT : 197 - ILL 2012

Uncertainty measurement list of laboratory		
Parameter	Range	Uncertainty
Voltage		
Up to 1000 V	up to 1 kHz	±1,5%
	1kHz up to 5 kHz	±2%
	5 kHz up to 20 kHz	±3%
	20 kHz and above	±5%
1000 V and above	dc up to 20 kHz	±3%
	20 kHz and above	±5%
Current		
Up to 5 A	dc up to 60 Hz	±1,5%
	60 Hz up to 5 kHz	±2,5%
	5 kHz up to 20 kHz	±3,5%
	20 kHz and above	±5%
	5 A and above dc up to 5 kHz	±2,5%
	5 kHz up to 20 kHz	±3,5%
20 kHz and above	±5%	
Leakage current		
up to 30 mA	50/60 Hz	±3,5%
30 mA and above	50 Hz - 5 kHz	±5%
Power		
	up to 1 W	±20 mW
	above 1 W and up to 3 kW	±3%
	up to 3 kW above 3 kW	±5%
Power Factor		
		±0,05
Frequency		
	up to 10 kHz	±0,2%
Resistance		
	1 mΩ up to 100 mΩ and above	±5%
	1 M Ω	
	above 1 TΩ	±10%
	for all other cases	±3%
Temperature		
	below 100°C	±2°C
	100°C up to 500°C	±3%
Time		
	10 ms up to 200 ms	±5%
	200 ms up to 1 s	±10 ms
	1 s and above	±1%
Linear dimensions		
	up to 1 mm	±0,05 mm
	1 mm up to 25 mm	±0,1 mm
	25 mm and above	±0,5%
Mass		
	above 10 g and up to 100 g	±1%
	100 g up to 5 kg	±2%
	5 kg and above	±5%
Force		
	for all values	6%
Mechanical energy		
	for all values	±10%
Torque		
		±10%
Angles		
		±1 degree
UR		
	30% to 95% RH	±6% RH
Gas & fluid pressure		
	for static measurement	±5%